



Locate Underground Utilities with Ground Penetrating Radar

UtilityScan[®]
with SIR[®] 4000

www.geophysical.com

The ever-popular UtilityScan[®] system is now available with the newly designed SIR[®] 4000 control unit. UtilityScan is the industry standard ground penetrating radar solution for the designation of subsurface utilities.

With UtilityScan, users can quickly identify and mark the location and depth of service utilities – gas, communications, sewer lines – and other metallic and non-metallic targets including underground storage tanks and PVC pipes. It is also ideal for environmental assessment, shallow subsurface geophysics, archaeology and forensic applications.



4-wheel cart shown

Designate Targets

- Real-time data collection and processing
- Multiple techniques to calculate depth of targets

Flexible Design

- Easy to transport and deploy
- Several deployment options for in-field accessibility
- WiFi, USB or Ethernet file transfer

Integrated System

- Windows[®] 8 based user interface
- Ruggedized, high-resolution 10.4 inch LED display
- Plug-and-play GPS

- 1** SIR[®] 4000 control unit
- 2** Interior, capsule-protected GPR antenna
- 3** Survey wheel

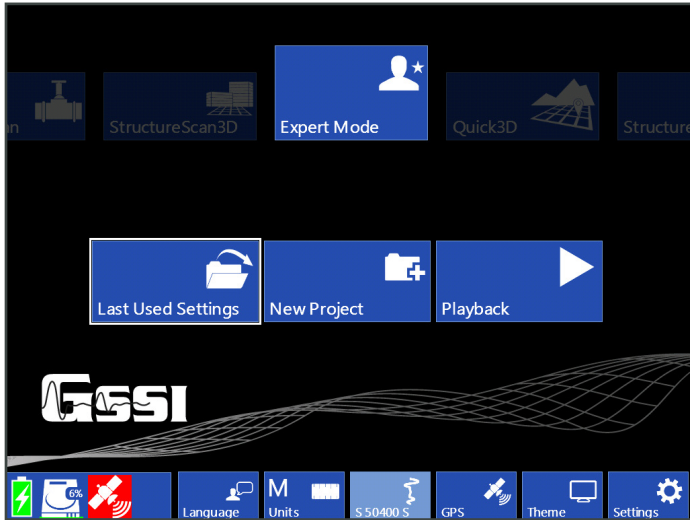
- 4** Ergonomic handle with flexible mount
- 5** Rugged cart



“GSSI UtilityScan GPR is easy to use, lasts a long time and works well.”

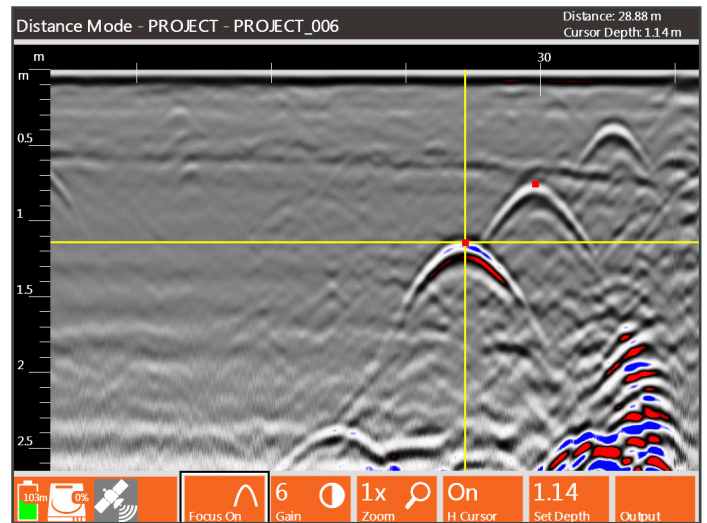
Patrick Moulin, GPRS Atlanta

Utility Locating Solutions



The SIR® 4000 comes with a new user interface offering a better user experience. The startup screen is very simple to navigate, users can launch application-specific modules, last used settings, start new projects or playback data from previous projects.

Designate the location of metallic and non-metallic pipes and other subsurface features in real time using the GSSI UtilityScan. The SIR 4000 offers users the ability to change display gain and filters in real-time while collecting data. Additionally, users can change the scale, add reference marks and personalize the color display for better data interpretation.



Control Unit Specifications

Data Storage	32 GB
Display	Enhanced 10.4" LED display
GPS	Data logged internally
Data Format	RADAN™ (.dzt)
Operating Temperature	-20°C to 40°C external (-4°F to 104°F)
Battery	Inspired Energy Ni2040ED, 3 hour runtime*
Ports	Antenna inputs analog and digital (one at a time), DC power input, Serial RS232 (GPS port), Accessory connector, HDMI video output, Ethernet to PC, USB 2.0 port, mini USB
Environmental	IP-65

*battery life dependent on level of display brightness

System Includes

- SIR® 4000 control unit
- 400 MHz or 270 MHz antenna
- Choice of cart options
- 2 meter control cable
- 2 batteries
- Battery charger
- Sunshade
- SIR® 4000 transit case
- AC adapter
- UtilityScan Quick Start Guide
- 2-year warranty

sales@geophysical.com

12 Industrial Way • Salem, NH 03079-2837
Tel: 603.893.1109 • Toll Free: 800.524.3011 • Fax: 603.889.3984

Geophysical Survey Systems, Inc.

CE and FCC Compliant

See Our Website For
More Information



Copyright © 2014 All Rights Reserved
Geophysical Survey Systems, Inc.
07.01.2014